

*[Compositeur anonyme]*

# Aria Echeggiata

Fa majeur

*Luth baroque à 11 chœurs*

**Manuscrit de Brno CZ-Bm371**

*Musée morave régional à Brno*

*Provenance : bibliothèque musicale de l'abbaye de Rajhrad 5.a.*

*(CZ-Bm Ms. sig. A.371)*

*Page 45*



# Aria Echeggiata<sup>(1\*)</sup>

Musical score for Aria Echeggiata, featuring a single melodic line on a five-line staff. The score is divided into systems of four measures each, with measure numbers 4, 8, 11, 15, and 18 indicated at the start of their respective systems. The notation includes slurs, ties, and dynamic markings such as 'f' and 'p'. The piece concludes with a double bar line and repeat dots at the end of the 11th measure system.

1. Air en écho

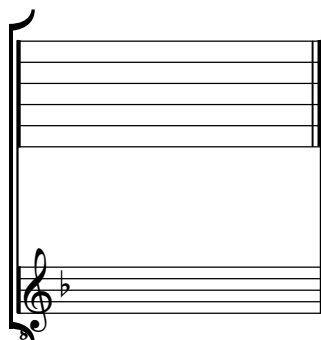
22

25

# Tonalité : Fa majeur

*Accord ordinaire du luth*

*Scordature par octave*



*Accord des 11 chœurs du luth*

Musical notation for an 11-voice lute chord. It consists of two staves. The upper staff has five lines and contains 11 notes, each labeled with a lowercase 'a'. The notes are distributed across the strings and octaves. The lower staff has five lines with a treble clef and a key signature of one flat (F major). It contains a sequence of 11 notes, each corresponding to one of the 'a' notes in the upper staff.