

*[Compositeur anonyme]*

# Aria

Fa majeur

*Luth baroque à 11 chœurs*

**Manuscrit de Brno CZ-Bm371**

*Musée morave régional à Brno*

*Provenance : bibliothèque musicale de l'abbaye de Rajhrad 5.a.*

*(CZ-Bm Ms. sig. A.371)*

*Page 43*



# Aria

The image displays a handwritten musical score for an aria, consisting of six systems of a vocal line and a basso continuo line. The notation is in a historical style, featuring various note values, rests, and dynamic markings.

**System 1:** The vocal line begins with a quarter note 'a' and a half note 'a'. The basso continuo line starts with a C-clef and a common time signature (C), followed by a sequence of notes including 'a', 'e', and 'a'. A fermata is placed over the final 'a' in the basso line.

**System 2:** The vocal line continues with a series of eighth and sixteenth notes. The basso continuo line has notes like 'a', 'e', and 'a', with a fermata over the second 'a'.

**System 3:** Similar to the previous systems, with vocal and basso lines. The basso line has a fermata over the final 'a'.

**System 4:** The vocal line includes notes like 'a', 'e', 'f', 'e', 'f'. The basso line has notes like 'a', 'a', 'a', 'a', 'a'. A fermata is present over the final 'a'.

**System 5:** The vocal line has notes like 'a', 'a', 'a', 'a', 'a'. The basso line has notes like 'a', 'a', 'a', 'a', 'a'. A fermata is present over the final 'a'.

**System 6:** The vocal line has notes like 'a', 'a', 'a', 'a', 'a'. The basso line has notes like 'a', 'a', 'a', 'a', 'a'. A fermata is present over the final 'a'.

**System 7:** The vocal line has notes like 'a', 'a', 'a', 'a', 'a'. The basso line has notes like 'a', 'a', 'a', 'a', 'a'. A fermata is present over the final 'a'.

**System 8:** The vocal line has notes like 'a', 'a', 'a', 'a', 'a'. The basso line has notes like 'a', 'a', 'a', 'a', 'a'. A fermata is present over the final 'a'.

**System 9:** The vocal line has notes like 'a', 'a', 'a', 'a', 'a'. The basso line has notes like 'a', 'a', 'a', 'a', 'a'. A fermata is present over the final 'a'.

12

14

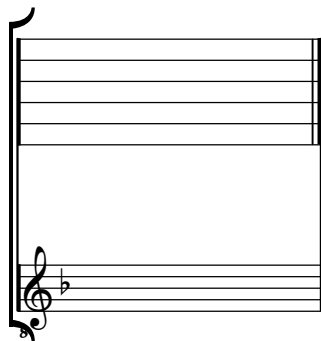
16

1. Tablature originale : quadruple-croches  
 2. Tablature originale : quadruple-croches

# Tonalité : Fa majeur

*Accord ordinaire du luth*

*Scordature par octave*



*Accord des 11 chœurs du luth*

