

Emond

(? - ?)

Allemande (Allemanda)

Ré majeur

Luth baroque à 11 chœurs

Manuscrit de Brno CZ-Bm371

Musée morave régional à Brno

Provenance : bibliothèque musicale de l'abbaye de Rajhrad 5.a.

(CZ-Bm Ms. sig. A.371)

Page 23

Allemande attribuée à Emond dans plusieurs manuscrits



Allemande (Allemanda)

Handwritten musical score for Allemande (Allemanda) in C major, 3/4 time. The score is written on a grand staff (treble and bass clefs) with a common time signature (C). The music is divided into measures, with measure numbers 1, 3, 5, 7, 9, and 10 indicated. The notation includes various rhythmic values (quarter, eighth, sixteenth notes), rests, and dynamic markings (f, ff). The score is written in a shorthand notation style, with letters (a, e, r, f, k) and symbols (r, f, k) used to represent notes and rests. The piece concludes with a double bar line and repeat dots.

1 *r* *↓* *♩* *♩* *♩* *♩* *♩* *♩* *♩* *♩* *♩*

3 *♩* *♩* *♩* *♩* *♩* *♩* *♩* *♩* *♩* *♩* *♩* *♩*

5 *♩* *♩* *♩* *♩* *♩* *♩* *♩* *♩* *♩* *♩* *♩*

7 *♩* *♩* *♩* *♩* *♩* *♩* *♩* *♩* *♩* *♩* *♩*

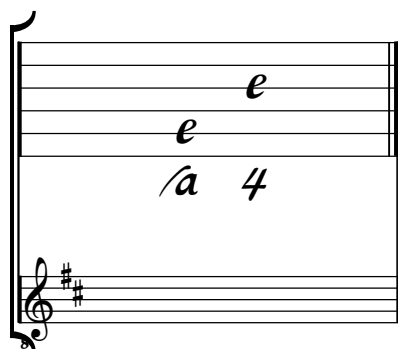
9 *♩* *♩* *♩* *♩* *♩* *♩* *♩* *♩* *♩* *♩* *↓*

10 *♩* *↓* *♩* *♩* *♩* *♩* *♩* *♩* *♩* *♩* *♩* *♩* *♩* *♩* *♩* *♩*

Tonalité : Ré majeur

Accord des basses du luth : 2 dièses

Scordature par octave



Accord des 11 chœurs du luth

