

[Compositeur anonyme]

[Aria]

Ré mineur

Le manuscrit de Brno CZ-Bm13268

Casimir Wenceslas Comte Verdenberg et Namiest

Année 1713

Brno, Musée régional de Moravie, département d'histoire de la musique

Provenance : Bibliothèque musicale de l'abbaye de Rajhrad 2

(CZ-Bm Ms. sig. A.13.268)

Folio 17r



32. [Aria]_(*)

Musical notation for the first system, measures 1-3. The staff shows a treble clef and a common time signature (C). The notes are: a, b, a, a, a, a, a, a, a, a, b, a, a, a. Handwritten notes below the staff are: //a //a //a, e a a a, b a a a.

Musical notation for the second system, measures 4-6. The staff shows a treble clef and a common time signature (C). The notes are: a, a, a, b, a, a, a, a, a, a, a, a, e, e, a. Handwritten notes below the staff are: //a, //a a a a, b a a a a. A '4' with '(2*)' is written below the first measure.

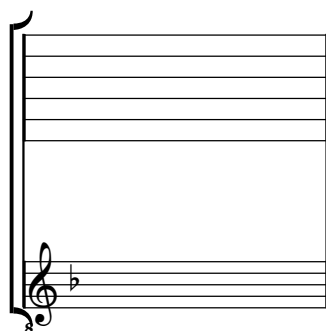
Musical notation for the third system, measures 7-8. The staff shows a treble clef and a common time signature (C). The notes are: a, a, a, a, e, a, a, a, a, a. Handwritten notes below the staff are: //a //a //a a, a a. A '7' is written below the first measure, and '(3*)' is written below the second measure. The system ends with a double bar line and a flourish.

- 1. Original : pièce sans nom
- 2. Original : pas d'indication rythmique
- 3. Original : pas d'indication rythmique

Tonalité : Ré mineur

Accord ordinaire du luth

Scordature par octave



Accord des 11 chœurs du luth



