

Claude Emond

(XVII^e siècle)

[Partie]

Allemande La belle par Mons: Emons
Courante de Monsieur Emons
Sarabande de Monsieur Emons
Gigue de Mons: Emons

Do majeur

Manuscrit de Berlin D-Bsa4060

*Berlin, Staatsbibliothek zu Berlin Preußischer Kulturbesitz
(Sing-Akademie)*

Berlin - D-Bsa SA 4060
pages 210 à 217 (folios 94v. à 98r.)

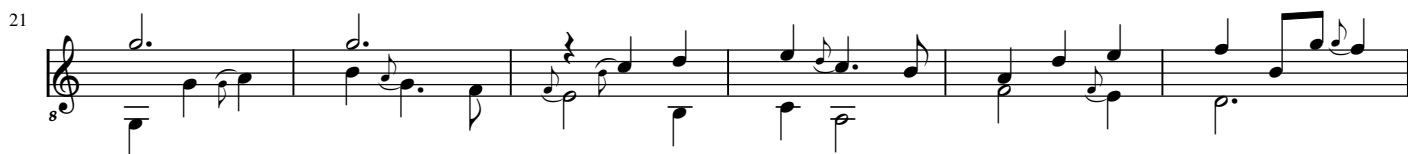


[Partie]

Allemande La belle par Mons: Emons

The image displays a musical score for a piece titled "Allemande La belle par Mons: Emons". The score is written in a single system with a treble clef and a key signature of one sharp (F#). The music is organized into six systems of staves, with measure numbers 1, 4, 7, 10, 13, and 16 indicated at the beginning of each system. The notation includes various rhythmic values such as eighth and sixteenth notes, rests, and accidentals. Chordal accompaniment is shown with block chords and some notes marked with an "8va" (octave) symbol. The piece concludes with a double bar line at the end of the sixth system.

Courante de Monsieur Emons



Sarabande de Monsieur Emons

Measures 1-4 of the Sarabande de Monsieur Emons. The music is in 3/4 time and G major. The melody consists of eighth and quarter notes, while the bass line features chords and single notes. Measure 4 ends with a repeat sign.

Measures 5-8 of the Sarabande de Monsieur Emons. The melody continues with eighth and quarter notes. The bass line includes chords and single notes. Measure 8 ends with a repeat sign.

Measures 9-12 of the Sarabande de Monsieur Emons. Measures 9 and 10 contain sixteenth-note passages in the melody, with '8va' markings. Measure 12 ends with a repeat sign.

Measures 13-17 of the Sarabande de Monsieur Emons. Measures 13 and 14 begin with a repeat sign. The melody features eighth and quarter notes. Measure 17 ends with a repeat sign.

Measures 18-21 of the Sarabande de Monsieur Emons. Measures 18 and 19 contain sixteenth-note passages in the melody, with '8va' markings. Measure 21 ends with a repeat sign.

Measures 22-25 of the Sarabande de Monsieur Emons. Measures 22 and 23 contain sixteenth-note passages in the melody, with '8va' markings. Measure 25 ends with a repeat sign.

Measures 26-29 of the Sarabande de Monsieur Emons. Measures 26 and 27 contain sixteenth-note passages in the melody, with '8va' markings. Measure 29 ends with a repeat sign.

Gigue de Mons: Emons

8

3

6

9

12

14

17

