

Johann Sebastian Bach

31 mars (21 mars) 1685 - 28 juillet 1750

Johannes Passion

Arioso

Betracht, meine Seel'

BWV245 - n° 31

Betracht, meine Seel'

Passion selon St Jean BWV 245 (n° 31) : Arioso

JS Bach

Adagio

Viola d'amour I

Viola d'amour II

Basse

Be - trach - te, mei - ne

Luth baroque

Orgue ou continuo

pp

This system contains the first five staves of the musical score. From top to bottom: Viola I, Viola II, Bass, Baroque Lute, and Organ/Continuo. The key signature is E-flat major (two flats) and the time signature is common time (C). The tempo is marked 'Adagio'. The organ part begins with a piano-piano (*pp*) dynamic. The lute part includes a tablature with letters 'a', 'b', 'r', and 'o' on a six-line staff. The vocal line is partially visible with the lyrics 'Be - trach - te, mei - ne'.

3

Seel, mit ängst - li - chem Ver - gnü - gen, mit bitt - rer Lust und

This system contains the next five staves of the musical score. From top to bottom: Viola I, Viola II, Bass, Baroque Lute, and Organ/Continuo. The vocal line continues with the lyrics 'Seel, mit ängst - li - chem Ver - gnü - gen, mit bitt - rer Lust und'. The lute part continues with its tablature. The organ part continues with its accompaniment.

5

halb be - klemmtem Her - zen, dein höch - stes Gut in Je - su

Figured Bass:
 a r a b a a r b r r b e | a r a r a r a r a r

7

Schmer - zen, wie dir auf Dor - nen, so ihn ste - chen, die

Figured Bass:
 b a a b a a b a a b a | r a r a a e a r a e r r r

9

Himmel-schlü-blu-men blühh! Du kannst sü-ße Frucht von
ssel - viel

f *f*

a *a*

11

sei-ner Wer-muth bre-chen, drum sieh' ohnUnter-laß auf Ihn,'.

f *f*

a *a*

13

auf Ihn, drum sieh ohn' Un - ter - laß auf ihn, ohn' Un -

a a a a b b b b a a a a b a a b a a b b b

15

- - ter - laß, drum ohn' ter - laß auf Ihn!
sieh Un -

a a b a b a f b r f a a b a a b b a a b r b a a

17

Musical score for the Arioso "Betracht, meine Seel" from the Johannes Passion by Johann Sebastian Bach. The score is in E-flat major and consists of five staves. The first two staves are vocal lines for the Soprano and Alto. The third staff is a bass line. The fourth staff contains a series of notes with slurs and accents, likely representing a figured bass or a specific melodic line. The fifth staff is a bass line. The key signature has two flats (B-flat and E-flat). The time signature is not explicitly shown but is likely common time (C).

Basse et luth

Adagio

Be - trach - te, mei - ne

3
Seel, mit ängst - li - chem Ver - gnü - gen, mit bitt - rer Lust und

5
halb be - klemmtem Her - zen, dein höch - stes Gut in Je - su

7
Schmer - zen, wie dir auf Dor - nen, so ihn ste - chen, die

9
Himmel - schlü - blü - men blü - hen! Du kannst sü - ße Frucht von
ssel - viel

11

sei - ner Wer - muth bre - chen, drum sieh' ohnUn-ter-laß auf Ihn,

a a a a 4 4 4 4 *a a a a a a a a*

13

auf Ihn, drum sieh ohn' Un -ter -laß auf ihn, ohn' Un -

a a a a b b b b *a a b a a b a a b b*

15

- - ter -laß, drum ohn' ter -laß auf Ihn !
sieh Un -

a a b a b a f b r f a a *r b r b a a b r b a*

17

a a a a a a a *a a b a a b a*

Basse, luth et orgue

Adagio

Be - trach - te, mei - ne

Seel, mit ängst - li - chem Ver - gnü - gen, mit bitt - rer Lust und

halb be - klemmtem Her - zen, dein höch - stes Gut in Je - su

7

Schmer-zen, wie dir auf Dor-nen, so ihn ste-chen, die

9

Himmel-schlüssel - blü - men blühh ! Du kannst sü - ße Frucht von

11

sei - ner Wer - muth bre - chen, drum sieh' ohnUnter-laß auf Ihn,'

13

auf Ihn, drum sieh ohn' Un -ter -laß auf ihn, ohn' Un -

a a a a b b b b a a a b a a b a a b b b

15

- - ter -laß, drum ohn' ter -laß auf Ihn !
sieh Un -

a a b a b a f b r f a a b r b r b b a a b r b b a a

a a a a a a a a a a a a a a

17

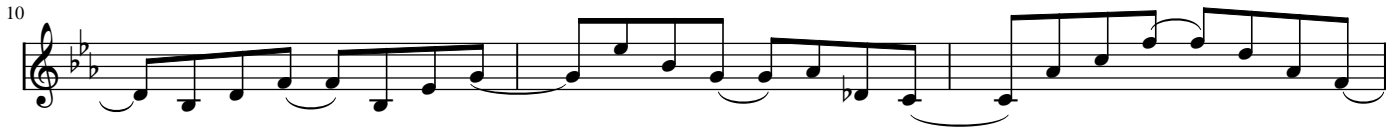
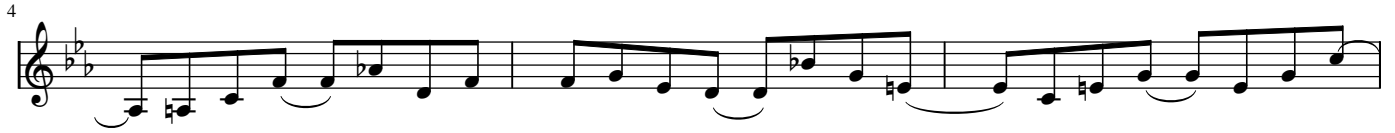
Betracht, meine Seel, E-flat Major.

a a a a a a a a a a a a a a

Viole d'amour I



Viole d'amour II



Basse

Be - trachte, mei - ne Seel, mit ängstli - chem Ver -

gnü - gen, mit bitt - rer Lust und halb be - klemm - tem Her - zen, dein

höch - stes Gut in Je - su Schmer - zen, wie dir ____ auf

Dor - nen, so ihn ste - chen, die Himmel - schlü - blü - men blühh ! Du
ssel -

kannst sü - ße Frucht von sei - ner Wer - muth bre - chen, drum
viel

sieh' ____ ohn' Un - ter - laß auf Ihn, auf Ihn, drum sieh ohn' ____

Un - ter - laß auf ihn, ohn' Un -

- - ter - laß, drum sieh ohn' Un - ter - laß auf

Ihn !

Luth baroque

Tuning: [f, d, a, f, d, A, G, F, Eb, D, C]

System 1: *m* *m m m m m m m*
a a a a a a a a a a a a a a
a a a a a a a a a a a a a a

System 2: *m* *m*
a a a a a a a a a a a a a a
a a a a a a a a a a a a a a

System 3: *m* *m*
a a a a a a a a a a a a a a
a a a a a a a a a a a a a a

System 4: *m* *m*
a a a a a a a a a a a a a a
a a a a a a a a a a a a a a

System 5: *m* *m*
a a a a a a a a a a a a a a
a a a a a a a a a a a a a a

System 6: *m* *m*
a a a a a a a a a a a a a a
a a a a a a a a a a a a a a

11 *m* *m*

a a a a 4 4 4 4 //a //a //a //a /a /a /a /a

13 *m* *m*

a a a a b b b b o o o o a a a a

15 *m* *m*

o o o o o o o o //a //a //a //a //a //a //a //a

17 *m m m m m m m* *J z -*

//a //a //a //a //a //a //a //a

Luth baroque

The image displays a musical score for a lute, titled "Luth baroque". It consists of nine systems, each with a treble staff and a bass staff. The music is written in E-flat major (two flats) and common time (C). The treble staff contains a melodic line with various rhythmic values, including eighth and sixteenth notes, and rests. The bass staff provides a harmonic accompaniment, primarily using eighth and sixteenth notes. The score includes various musical notations such as slurs, ties, and dynamic markings like γ . The systems are numbered 1 through 9 on the left side.

10

11

12

13

14

15

16

17

18

Luth baroque

The image displays a musical score for a lute, titled "Luth baroque". It consists of nine systems of music, each with a treble staff and a bass staff. The key signature is E-flat major (two flats), and the time signature is common time (C). The music is written in a style characteristic of the Baroque period, featuring a mix of eighth and sixteenth notes, often beamed together. The bass line is primarily composed of quarter notes, while the treble line features more complex rhythmic patterns, including sixteenth-note runs and slurs. The systems are numbered 1 through 9 on the left side. System 1 begins with a treble staff containing a series of eighth notes and a bass staff with quarter notes. Systems 2 through 9 continue this pattern, with varying melodic lines in the treble and harmonic support in the bass. The notation includes various accidentals (flats and naturals) and articulation marks like slurs and accents.

10

11

12

13

14

15

16

17

18

Detailed description: This image shows a page of musical notation for a basso continuo part. It consists of eight systems, each representing a measure of music. Each system has a bass clef and a key signature of two flats (B-flat and E-flat). The notation is written on a five-line staff. The upper staff of each system contains a melodic line with eighth and sixteenth notes, often beamed together. The lower staff contains a bass line with quarter and eighth notes. Measure 17 features a slur over the upper staff. Measure 18 begins with a fermata over a note and ends with a double bar line.

Orgue ou continuo



5



10



15

